



RTX-77C-CAP

Dakota Digital RTX Instrument Installation
For 1977-'90 Chevrolet Caprice/Impala
1984-'86 Pontiac Parisienne

Your new RTX-77C-CAP kit includes:

RTX Display



Universal
Sender Pack



Buzzer



Installation Manuals



Main Harness

Switch
Assembly



Control Box



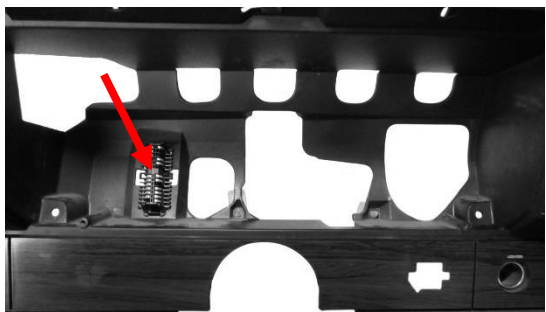
(2X)
10-32
Flange
Nuts

Installation

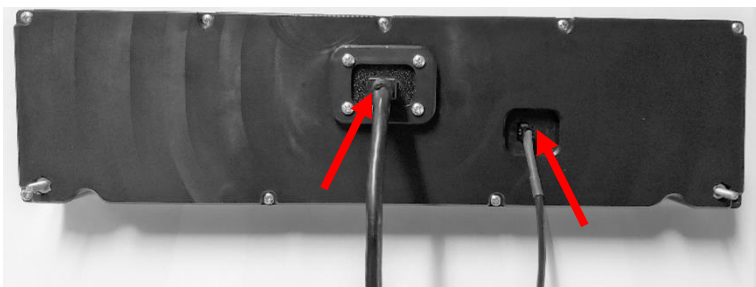
1. First, you will need to remove the stock gauge cluster; the procedure may vary depending on year of vehicle. Remove the five (5) screws and three (3) plastic push pins indicated in the photo. On the backside there are two (2) nuts towards the bottom that hold the cluster to the dash. Also disconnect the wiring harness, shift indicator cable, and speedometer cable. Retain the factory lens and screws for reassembly.



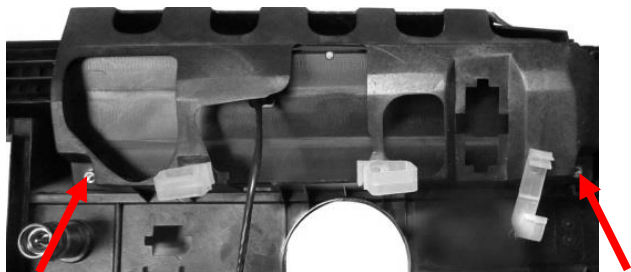
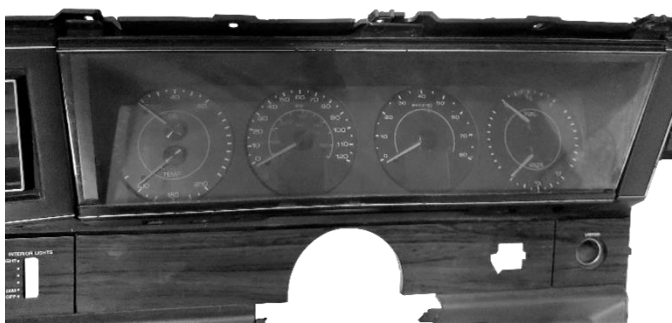
2. Remove the factory connector to allow clearance for the RTX system.



3. Attach the provided main harness and optional buzzer cable to the back of the RTX system. Carefully route the other end of the main harness to the control box mounting location.



4. Place the RTX system into the dash and align the cluster to sit straight and then secure the system from the back side of the dash using the two (2) provided nuts.



5. Secure the factory lens over the RTX system using the five (5) factory screws. You are now done mounting the RTX system; refer to the main manual for wiring instructions to complete the RTX installation.



⚠WARNING: This product can expose you to chemicals including lead, which is known to the State of California to cause cancer and birth defects or other reproductive harm. For more information go to www.P65Warnings.ca.gov



4510 W. 61st St. North
Sioux Falls, SD 57107
www.dakotadigital.com
dakotasupport@dakotadigital.com

Phone (605) 332-6513
Fax (605) 339-4106

© Copyright 2021 - Dakota Digital

Manual # 650772